

RESIDENCE 2AR



RESIDENCE 2BR

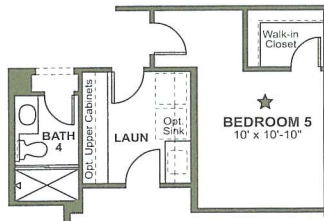
Stone or brick veneer is dictated by elevation type.



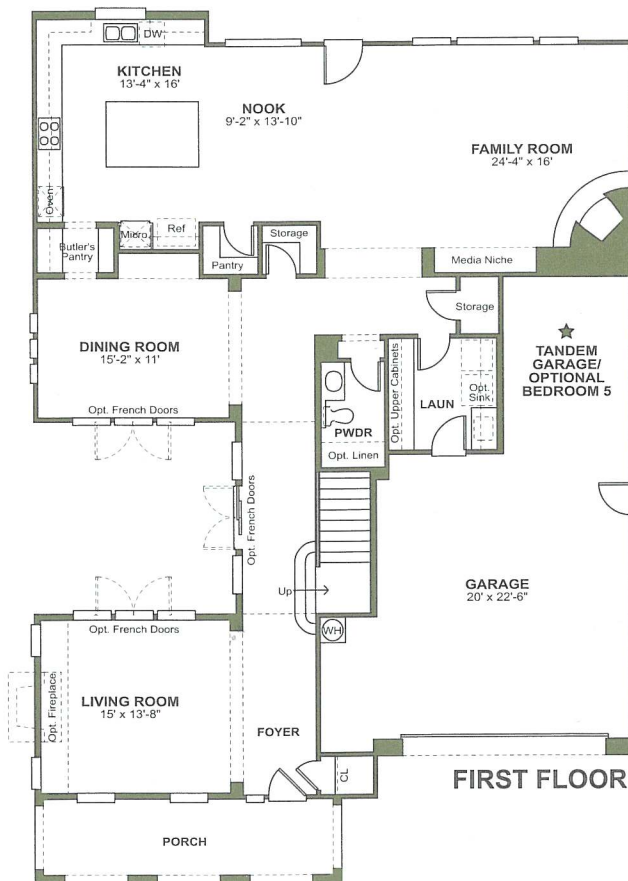
RESIDENCE 2CR

Exterior detail, floor plans, deck and some window locations may vary per elevation. Floor plans and elevations are artist's renderings and are not to scale. K. Hovnanian at La Costa, LLC reserves the right at its sole discretion to make changes or modifications to maps, floor plans, elevations, specifications, materials, features and exterior colors without prior notice.





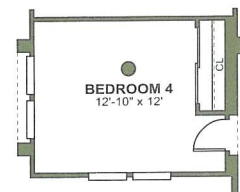
OPTIONAL BEDROOM 5 & BATHROOM 4  
AT TANDEM GARAGE



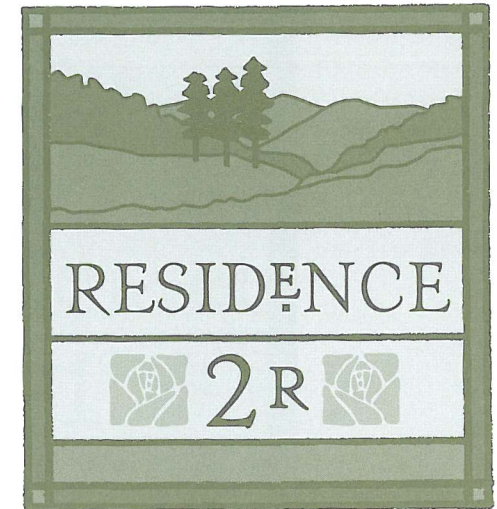
FIRST FLOOR



SECOND FLOOR



OPTIONAL BEDROOM 4 AT LOFT  
(WITH OPTIONAL DOOR  
AT BATHROOM 2)



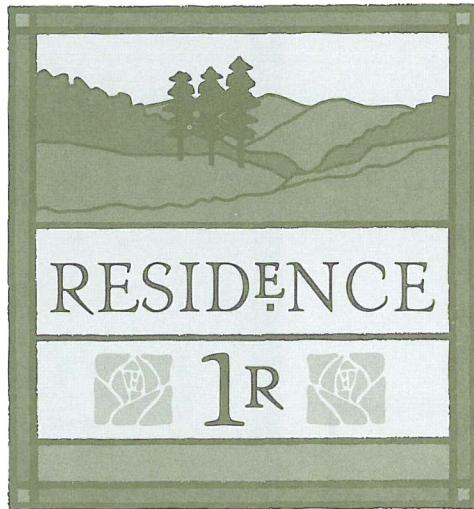
Approximately 3,489 Square Feet

3 Bedrooms  
3 1/2 Bathrooms  
Family Room  
Living Room  
Dining Room  
Nook  
Loft  
3 Car Garage

#### ROOM OPTIONS:

Optional Bedroom 4  
Optional Bedroom 5 and Bathroom 4





RESIDENCE 1AR



RESIDENCE 1BR

Stone or brick veneer is dictated by elevation type.



RESIDENCE 1CR

Stone or brick veneer is dictated by elevation type.

Exterior detail, floor plans, deck and some window locations may vary per elevation. Floor plans and elevations are artist's renderings and are not to scale. K. Hovnanian at La Costa, LLC reserves the right at its sole discretion to make changes or modifications to maps, floor plans, elevations, specifications, materials, features and exterior colors without prior notice.

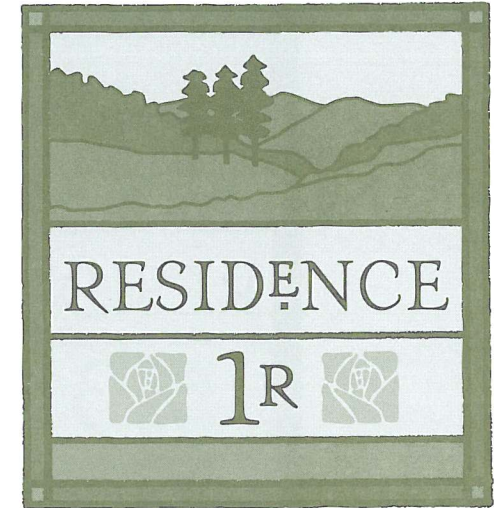


## OPTIONAL EXERCISE ROOM AT TANDEM GARAGE

### OPTIONAL MEDIA ROOM AT LOFT

## FIRST FLOOR

## SECOND FLOOR

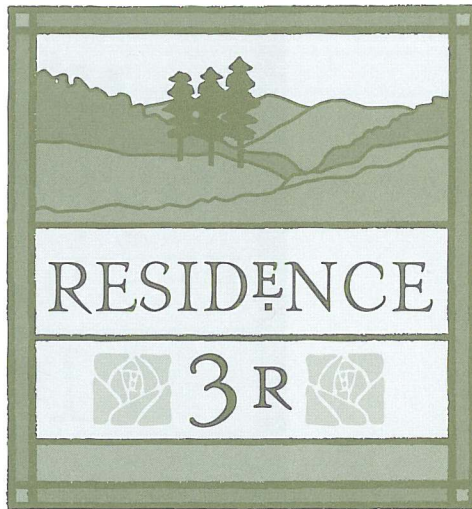


Approximately 3,369 Square Feet

3 Bedrooms  
3 1/2 Bathrooms  
Living Room  
Dining Room  
Family Room  
Nook  
Den  
Loft  
3 Car Garage

ROOM OPTIONS:  
Optional Exercise Room  
Optional Media Room





RESIDENCE 3AR



RESIDENCE 3BR

Stone or brick veneer is dictated by elevation type.



RESIDENCE 3CR

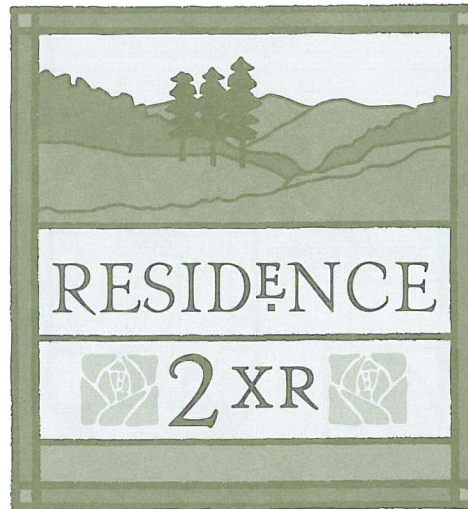
Stone or brick veneer is dictated by elevation type.

Exterior detail, floor plans, deck and some window locations may vary per elevation. Floor plans and elevations are artist's renderings and are not to scale. K. Hovnanian at La Costa, LLC reserves the right at its sole discretion to make changes or modifications to maps, floor plans, elevations, specifications, materials, features and exterior colors without prior notice.









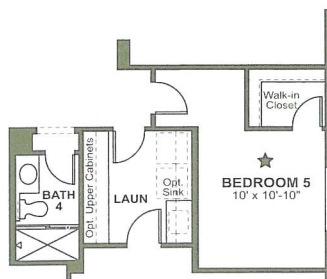
NOT MODELED



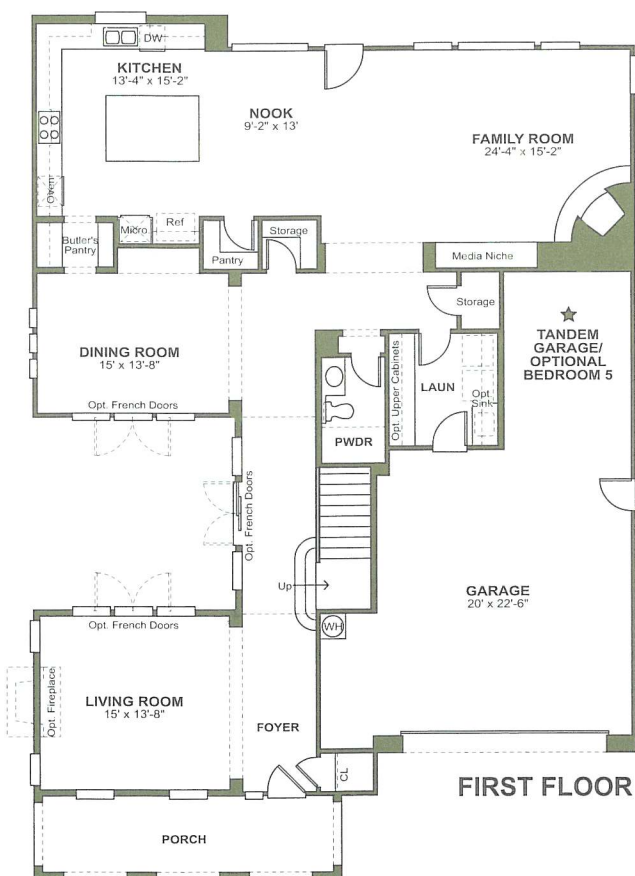
 RESIDENCE 2A x R 

Exterior detail, floor plans, deck and some window locations may vary per elevation. Floor plans and elevations are artist's renderings and are not to scale. K. Hovnanian at La Costa, LLC reserves the right at its sole discretion to make changes or modifications to maps, floor plans, elevations, specifications, materials, features and exterior colors without prior notice.





OPTIONAL BEDROOM 5 & BATHROOM 4  
AT TANDEM GARAGE



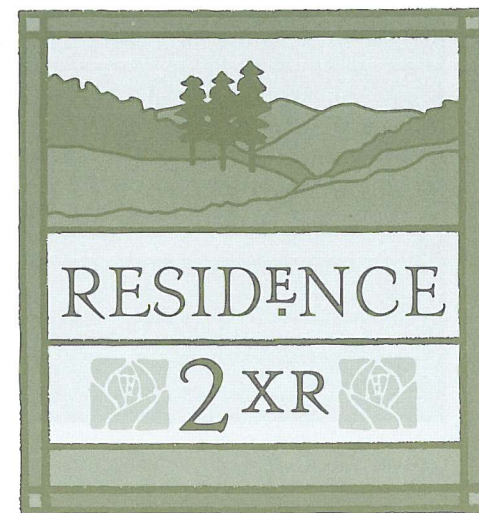
FIRST FLOOR



SECOND FLOOR



OPTIONAL BEDROOM 4 AT LOFT  
(WITH OPTIONAL DOOR  
AT BATHROOM 2)



Approximately 3,263 Square Feet

- 3 Bedrooms
- 3 1/2 Bathrooms
- Family Room
- Living Room
- Dining Room
- Nook
- Loft
- 3 Car Garage

#### ROOM OPTIONS:

- Optional Bedroom 4
- Optional Bedroom 5 and Bathroom 4

NOT MODELED





## STUNNING EXTERIOR DESIGN AND DETAIL

- Architecture inspired by Italian, Craftsman, European Country and Spanish styles
- Roll-up door garages with openers included
- Nine distinctive exteriors
- Handsome 8' fiberglass ThermaTru® Smooth Star entry doors with raised panels and top lites
- Custom-selected exterior lighting to enhance the architecture of each home
- Unique stucco sand finish to match architecture of home
- Convenient weather-proofed exterior electrical outlets
- Weather-stripping for all exterior doors
- Large variety of fire resistant concrete, tile and asphalt shingle roof styles to enhance architectural designs
- Enhanced brick and stone masonry veneer add authenticity to architecture
- Non-combustible, fiber-cement siding by CertainTeed®
- Decks and outside living areas on select Residences

## INTERIOR ELEGANCE AND LIVABILITY

- Dramatic 9' and 10' volume ceilings
- Wood burning fireplace in the family room
- 3 7/8" baseboards and 2 7/8" door casings
- Large windows and glass doors throughout home to enhance the dramatic views
- Custom rounded wall corners for added elegance
- Kohler® fixtures and faucets throughout
- Elongated water closets throughout
- Recessed can lighting throughout
- Energy-efficient forced air heating
- Rocker-style light switches
- Large interior laundry room with base cabinetry and cultured marble countertops
- Thoughtfully designed storage closets throughout
- 6" x 6" tile countertops throughout (except laundry)
- Quality Kwikset® door hardware
- Two-toned staircase and painted spindles with stained handrail and newel posts

## KITCHENS OF GOOD TASTE

- Built-in Whirlpool® Gold appliances
- Kitchen Aid® 36" 5 burner cooktop with Imperial vent hood
- Double oven with Accu-Bake® temperature management system and self-cleaning device
- Built-in Whirlpool Gold® microwave
- 6 cycle Whirlpool Gold® dishwasher with high temperature scouring system and nylon coated racks
- Versatile center preparation islands with added storage space
- Spacious walk-in pantries
- Roomy breakfast nooks

- White thermofoil European cabinetry with adjustable shelves, side door guides and concealed hinges
- 6" x 6" tile countertops with 6" backsplash, full height behind cooktop

## MASTERFULLY DESIGNED SUITES

- Spacious walk-in closets with double shelves and stained poles
- Double mirrored closet doors
- His and hers Kohler® china sinks with 6" x 6" ceramic tile pullmans
- Adult height vanities with ample drawers for extra storage
- Compartmentalized water closet with water-saving commode
- Large and inviting 6' oval tubs with ceramic tile surrounds
- Oversized walk-in showers with 6" x 6" ceramic tile up to 7' heights

## METICULOUS CONSTRUCTION DETAILS

- Category 5 structured wiring in family room, kitchen, all bedrooms, dens and bonus rooms
- Fully dry-walled, tandem garages (Residences 1 and 2)
- Low-E dual-pane vinyl windows for energy efficiency
- Energy-efficient 50-gallon water heater
- Pressure balancing shower valves
- State-of-the-art copper plumbing
- Joist truss silent floor system for increased strength and noise reduction
- 9" moisture stop treatment at windows
- Insulated exterior walls and ceilings per Title 24
- Gas hook-up in laundry area
- Post-tension slab foundations

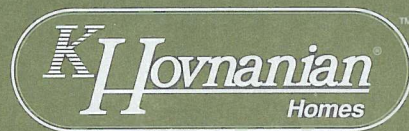
K. Hovnanian at La Costa, LLC reserves the right at its sole discretion to make changes or modifications to maps, floor plans, elevations, specifications, materials, features and exterior colors without prior notice. Square footage is approximate. Product availability is subject to change. Options may be included at additional cost and are subject to construction cut-off dates. All maps, floor plans, landscaping and elevation renderings are artist's conceptions and are not to scale. Information regarding facilities and their related amenities, including completion dates and assessments, is available. Please see a sales associate for details.





A classic Morris chair by the fireplace, window seat, upholstered in vintage Stickley. The simplicity of the Arts and Crafts Era was also the key to its timeless elegance and grace. Revering such subtleties, K. Hovnanian® has captured the spirit of the Arts and Crafts Movement at Hillock at La Costa Oaks, giving its warmth and character a new and inviting goal: to win your heart. The grand scale of Hillock is authentically enhanced by single-story elements, varying each design. Pitched rooflines and front courtyards accentuate the texture and details of the Italianate, European Country and Craftsman Bungalow architecture. Hillock at La Costa Oaks reflects the restoration of revered traditions, interwoven with today's most sought-after comforts. From grand lofts to first floor master suites, from the option of an enormous deck to the treasure of a courtyard, the Residences of Hillock fulfill a lifetime's worth of desires. Adding your home's personal value, the naturally splendid La Costa Oaks community brings profound rewards. With the Oaks Club's pool and amenities at its heart, seemingly endless paths lead you to native botanical preserves. Spectacular view surroundings celebrate the interplay of people and land, land and people that inspired the Arts and Crafts Era. And like a garden walk leading to a front door, Hillock welcomes you. ■





# HILLOCK

■ AT LA COSTA OAKS ■

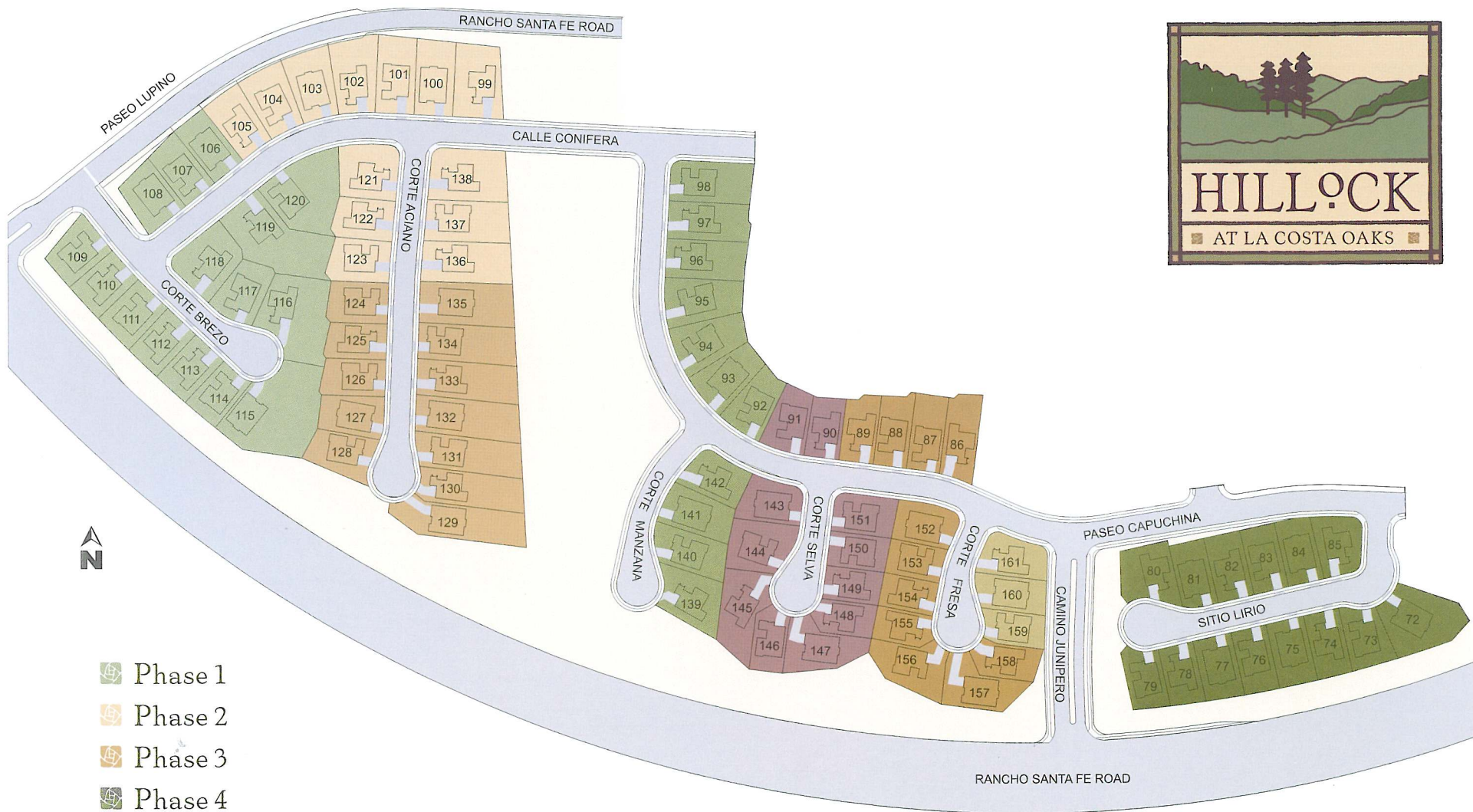


3458 CORTE FRESA  
CARLSBAD, CA  
9 2 0 0 9

Tel 760.943.1964  
Fax 760.943.1874  
www.khov.com







-  Phase 1
-  Phase 2
-  Phase 3
-  Phase 4
-  Phase 5
-  Phase 6
-  Phase 7
-  Models

