



Clifton Heights

LA COSTA OAKS



LA COSTA FROM A GRAND NEW PERSPECTIVE



Clifton Heights, with its uncommon outlook and architectural styling stands above and apart within the La Costa Oaks community.

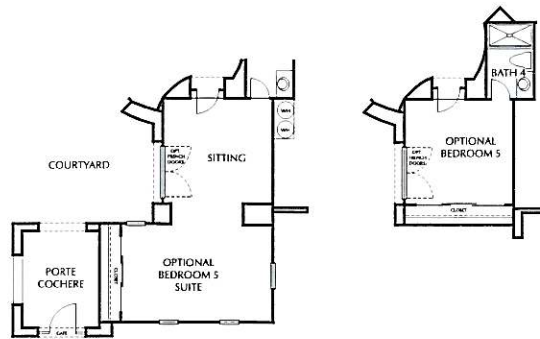
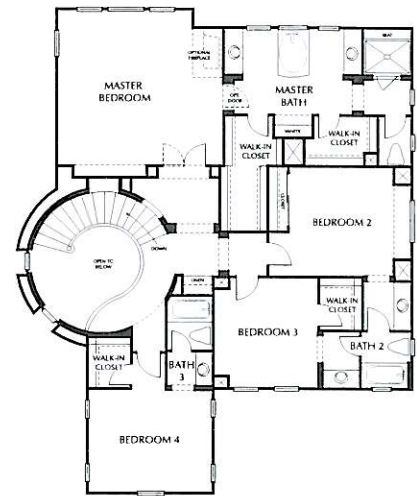
Nestled high amid coastal foothills near a pristine back-country preserve, Clifton Heights is truly in harmony with its natural surroundings. Offering a choice of Traditional Monterey, European Country, Craftsman Bungalow and Spanish Colonial architecture, the homes of Clifton Heights help bring the outdoors in with appealing features like central courtyards with a fireplace. And sunny breakfast nooks that open out to the backyard, the hills beyond and endless blue sky.

These remarkable residences also provide all the sophisticated styling and detail you would expect. An elegant porte cochere leading to a grand courtyard entryway. A sweeping spiral staircase. The quiet comforts of a den or sitting room. An optional wine closet. Three or four-car garages, and so much more.

Adding to Clifton Heights' appeal is its close convenience to the recreational focal point of the community, the private Oaks Club with its swimming pool, fitness facility, clubhouse and entertainment areas.

For a new perspective on La Costa at its very finest – as it was meant to be – come up. All the way up, to Clifton Heights.

RESIDENCE ONE



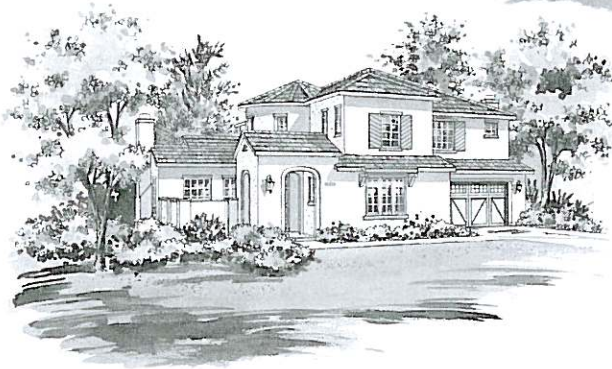
With an elegant porte cochere and dramatic spiral staircase in the foyer, this residence combines livability with luxury. Designed with a home office, this residence also offers the option of a 5th bedroom suite. At 3,535 square feet, it includes 4 bedrooms, 4.5 baths and a 3-car split garage.



Residence One, Elevation A



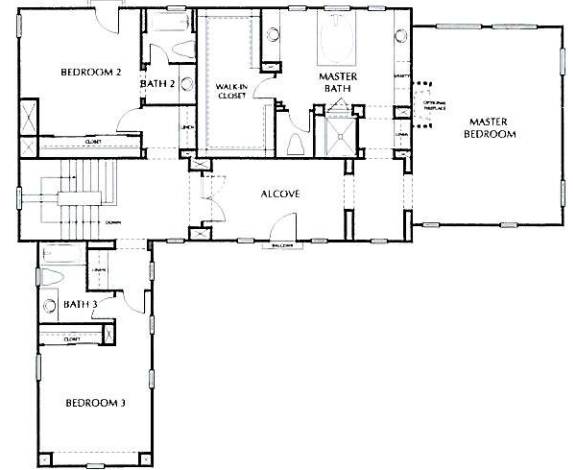
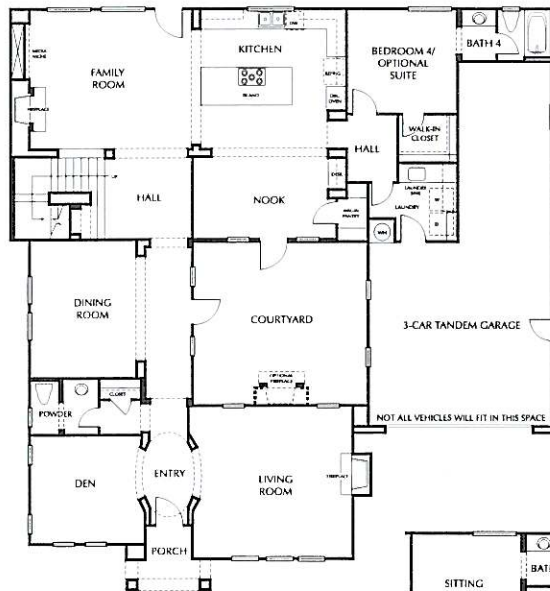
Residence One, Elevation B



Residence One, Elevation C

Builder reserves the right to make changes including but not limited to floor plan, specifications, features, prices, parking, fencing & plot plan without prior notice. Some options may not be available depending on the stage of construction. Please see your sales consultant.

RESIDENCE TWO



An intimate central courtyard and its optional fireplace assure unity of indoors and outdoors. Note the large walk-in closet in the master suite. At 3,994 square feet, this residence features 4 bedrooms, 4.5 baths, and a 3-car tandem garage.

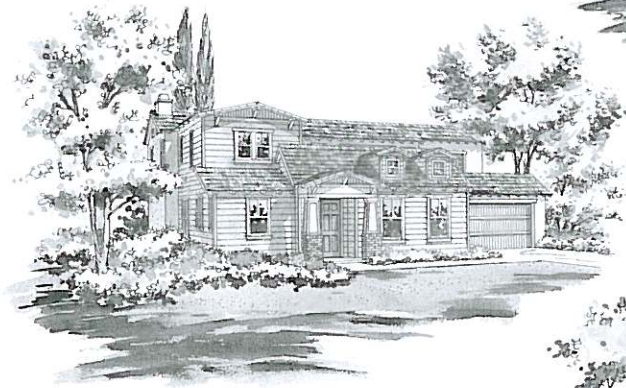
Residence Two, Elevation A



Residence Two, Elevation B

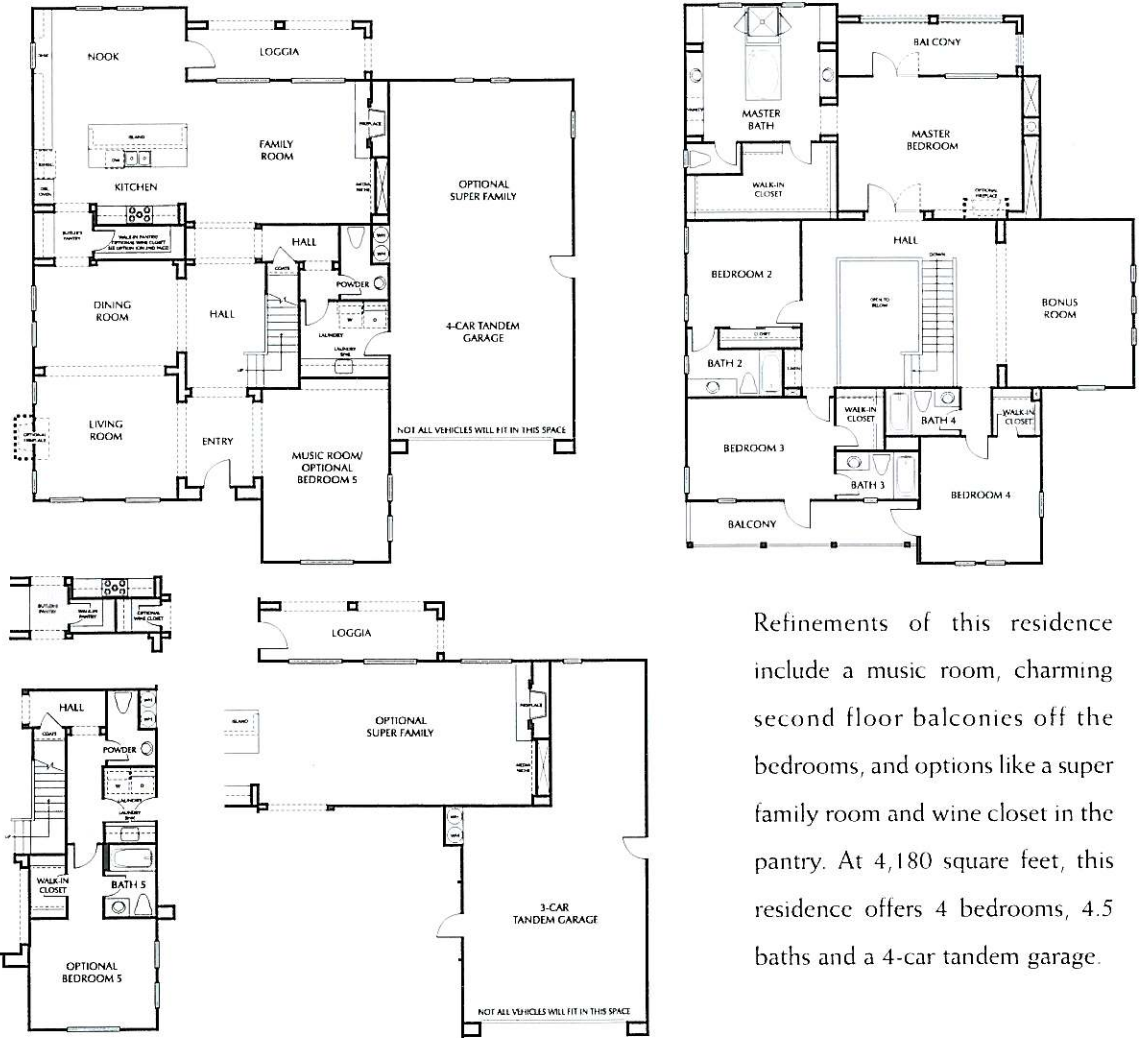


Residence Two, Elevation C



Builder reserves the right to make changes including but not limited to floor plan, specifications, features, prices, parking, fencing & plot plan without prior notice. Some options may not be available depending on the stage of construction. Please see your sales consultant.

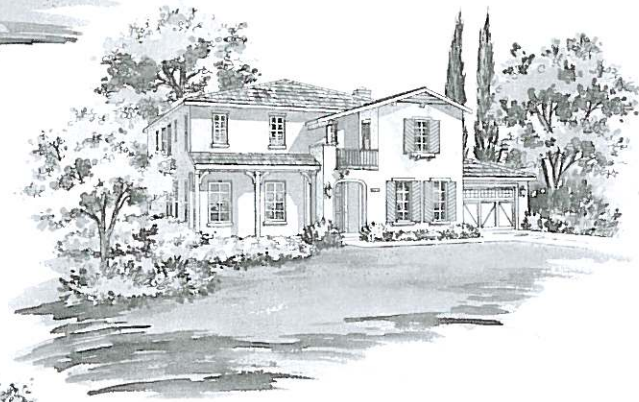
RESIDENCE THREE



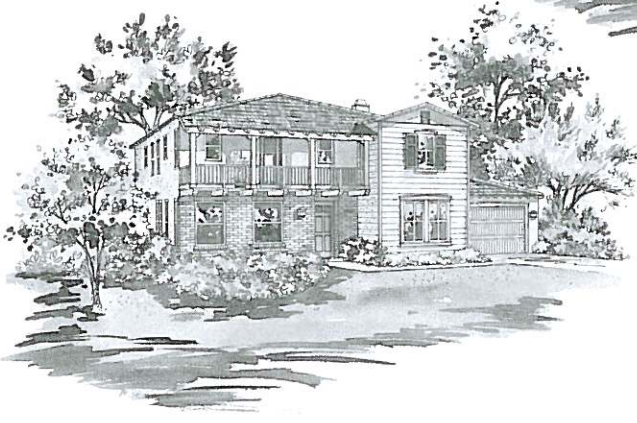
Refinements of this residence include a music room, charming second floor balconies off the bedrooms, and options like a super family room and wine closet in the pantry. At 4,180 square feet, this residence offers 4 bedrooms, 4.5 baths and a 4-car tandem garage.



Residence Three, Elevation A



Residence Three, Elevation C



Residence Three, Elevation D

Builder reserves the right to make changes including but not limited to floor plan, specifications, features, prices, parking, fencing & plot plan without prior notice. Some options may not be available depending on the stage of construction. Please see your sales consultant.

OUTSTANDING CLIFTON HEIGHTS FEATURES

INTERIOR FEATURES

All the special things that make your house a home

- Flexible floor plans
- Ceramic tile entries
- Volume ceilings in selected areas
- Designer baseboards and door casings
- Paneled interior doors
- Painted handrails and Newel Posts
- Bullnose drywall corners
- Moen® satin finished fixtures
- Wood burning fireplaces with custom surrounds and wood mantels
- White Decora® light switches
- Designer selected light fixtures
- Wood shelf and pole in closets
- Pre-wired for cable (quad shield) in family room and all bedrooms
- Pre-wired for telephone (CAT 5E) in kitchen and all bedrooms
- Ceramic tile tub and shower surrounds
- Interior laundry areas with storage cabinets
- White thermofoil cabinetry at laundry and TV niches
- Maple finished linen cabinets
- 6x6 ceramic tile countertops at secondary baths
- 36" mirrored medicine cabinets in master bath and secondary baths
- Exhaust fan in all baths

GOURMET KITCHENS

The heart of your home

- Maple finished raised panel cabinetry
- Gourmet islands
- Granite slab at countertops
- Whirlpool® stainless steel appliances
 - 5-burner gas cooktop
 - Built-in, self-cleaning double oven
 - Multi-cycle dishwasher
 - Built-in microwave
- Double sink with sound insulated garbage disposal
- Spacious breakfast nooks
- Plumbed for automatic ice maker
- Spacious pantries
- Recessed lighting

MASTER SUITE

Your private sanctuary

- Maple finished cabinetry
- Spacious walk-in closets
- Mirrored wardrobe door(s)
- Double china basins with Moen® satin finished fixtures
- 6x6 ceramic tile vanity tops
- 6x6 ceramic tiled tub and shower surrounds
- Dual shower heads
- Oval roman style tubs
- Clear glass shower enclosures
- Compartmentalized master bath
- Separate tub and shower

STANDARD HOME THEATRE SYSTEM

- BOSE® DVD/CD/AM-FM tuner and flush-mounted speakers
- 42" flat-screen HDTV
- Four pre-wired locations for expansions opportunities
- Installation, system set-up and orientation

ENERGY SAVING FEATURES

Helping you help the environment

- Dual glazed vinyl windows throughout
- Fully insulated exterior walls and ceilings in living areas
- Forced air gas heating systems with Flush-mounted programmable thermostat
- Pre-plumbed for A/C
- Energy efficient, glass lined gas water heater
- Water saving plumbing fixtures throughout

EXTERIORS

The details that make it yours

- A variety of distinctive exteriors
- Coordinated exterior color palette
- Long lasting concrete tile roofs
- Rear and side yard fencing
- Gas stub for outdoor BBQ
- Concrete driveways and walkways
- 2-4 car garages
- Pest Defense® system

CENTEX DESIGN CENTER OPPORTUNITIES Our Design Center provides professional consultation and an impressive array of upgrade to assist you in personalizing your home. We invite you to contact a representative at 760-929-7051.

Centex Homes reserves the right to modify floor plans, elevations, features and prices without notice or obligation.

